

# Mt. Thalay Sagar (6904 Mt) Expedition 2011

*Organized by:*

## South Calcutta Trekkers Association

Off: 14 Chakraberia Lane, Kolkata 700020

Club: 45B Puddapukur Road, Kolkata 700020

URL: [www.scta.in](http://www.scta.in)

Expedition summary	
1. Name of the Association	South Calcutta Trekkers Association
2. Name of the Expedition	Mt Thalay Sagar (6904 Mt) Expedition 2011
3. Name of the Peak with height in metres and six figure co-ordinates	Mt. Thalay Sagar Height: 6904 meters Co-ord: 30°51' N, 78°59' E
4. Date on which permit given by IMF	11 <sup>th</sup> July 2011
5. Nominal role of the team members	Leader – Rajsekhar Maity Quarter Master – Sujit Bag Treasurer – Upal Chakraborty Doctor – Dr Saibal Misra Members – Arindam Jana Dipen Samanta Brijes Day
6. Commencement of Trek	22 <sup>st</sup> Aug '11 from Gangotri
7. Number of camps en route to Base Camp	Two, in Bhuj Kharak & Kedar Kharak
8. Interaction with local administration	1. District Magistrate Office, Uttarkashi 2. Superintendent of Police Office, Uttarkashi 4. DFO, Uttarkashi 3. Forest Office, Gangotri No assistance was required and no problems were faced
9. Establishment of Base Camp	Kedar Tal (4912 Mt) on 24 <sup>th</sup> Aug '11
10. Establishment of higher camps	Camp – I (5030 Mt) on 27 <sup>th</sup> Aug '11 Camp – II (5335 Mt) on 30 <sup>th</sup> Aug '11 Camp – III (6000 Mt) on 4 <sup>th</sup> Sep '11 Camp – IV (6400 Mt) on 5 <sup>th</sup> Sep '11
11. Technical difficulty on way to higher camps	<u>Base to Camp I</u> No technical difficulty faced. Simple trek with gradual height gain by true left lateral moraine of Kedar Bamak (Glacier). <u>Camp I to Camp – II</u> 1 <sup>st</sup> Section – Crossing the Kedar Bamak from true left lateral moraine to the true right lateral moraine. Trek over glacial moraine. 2 <sup>nd</sup> Section – Height gain on scree. <u>Camp – II to Camp – III</u> 1 <sup>st</sup> Section – Ice field with gradual slope & occasional crevasses. 2 <sup>nd</sup> Section – Traverse by the junction of the ice field & the rock wall at 60-70 deg gradient. 3 <sup>rd</sup> Section – Straight climb by the junction of the rock wall & the snow slope of 60-70 deg gradient.

	<p><u>Camp – III to Camp – IV</u>  1<sup>st</sup> Section – mixed wall of Rock &amp; Ice of 60 / 70 deg gradient.  2<sup>nd</sup> Section – Snow slope of 60 deg gradient</p> <p><u>Camp – IV to Summit</u>  1<sup>st</sup> Section – Near vertical Rock Wall.  2<sup>nd</sup> Section – Sharp snow ridge with cornice.  3<sup>rd</sup> Section – Vertical Rock Wall.  4<sup>th</sup> Section – Snow slope of 50/ 60 deg gradient leading to the summit.</p>
12. Snow & Rock condition	<p><u>Snow</u>  Due to regular bad weather it was soft snow beyond Camp – II on the ice field &amp; south west ridge.</p> <p><u>Rock</u>  From Base Camp to Camp – II was glacial moraine. From Camp – II to the summit it was granite walls occasionally broken.</p>
13. Weather Condition	Weather condition was of a retreating monsoon. More or Less drizzle almost everyday on the lower camps and snow on the higher camps. Prolonged bright sun was absent with occasional whiteout.
14. Summit Report	Attached
15. Camp site cleaning activity & disposal of garbage.	All non bio degradable garbage were carried down and submitted at the forest office at Gangotri.
16. Maximum height attained and its date	The summit 6904 Meter, on 7 <sup>th</sup> Sep '11 at 09:30 hrs
17. Name of Summiteers	<ol style="list-style-type: none"> <li>1. Arindam Jana</li> <li>2. Upal Chakraborty</li> <li>3. Phurba Gyalgen Sherpa</li> <li>4. Ang Dorje Sherpa</li> <li>5. Dawa Oangchu Sherpa</li> </ol>
18. Name of LO	Not applicable
19. Total Expenditure	Attached
20. Details of Day by Day events	Attached
21. Suggestion / Complain	Suggestion – Increase IMF financial grant based on difficulty of the expedition.
22. Survey of India map or sketch marking accurately the route, camp site and their heights.	Attached

**Rajsekhar Maity**

Leader

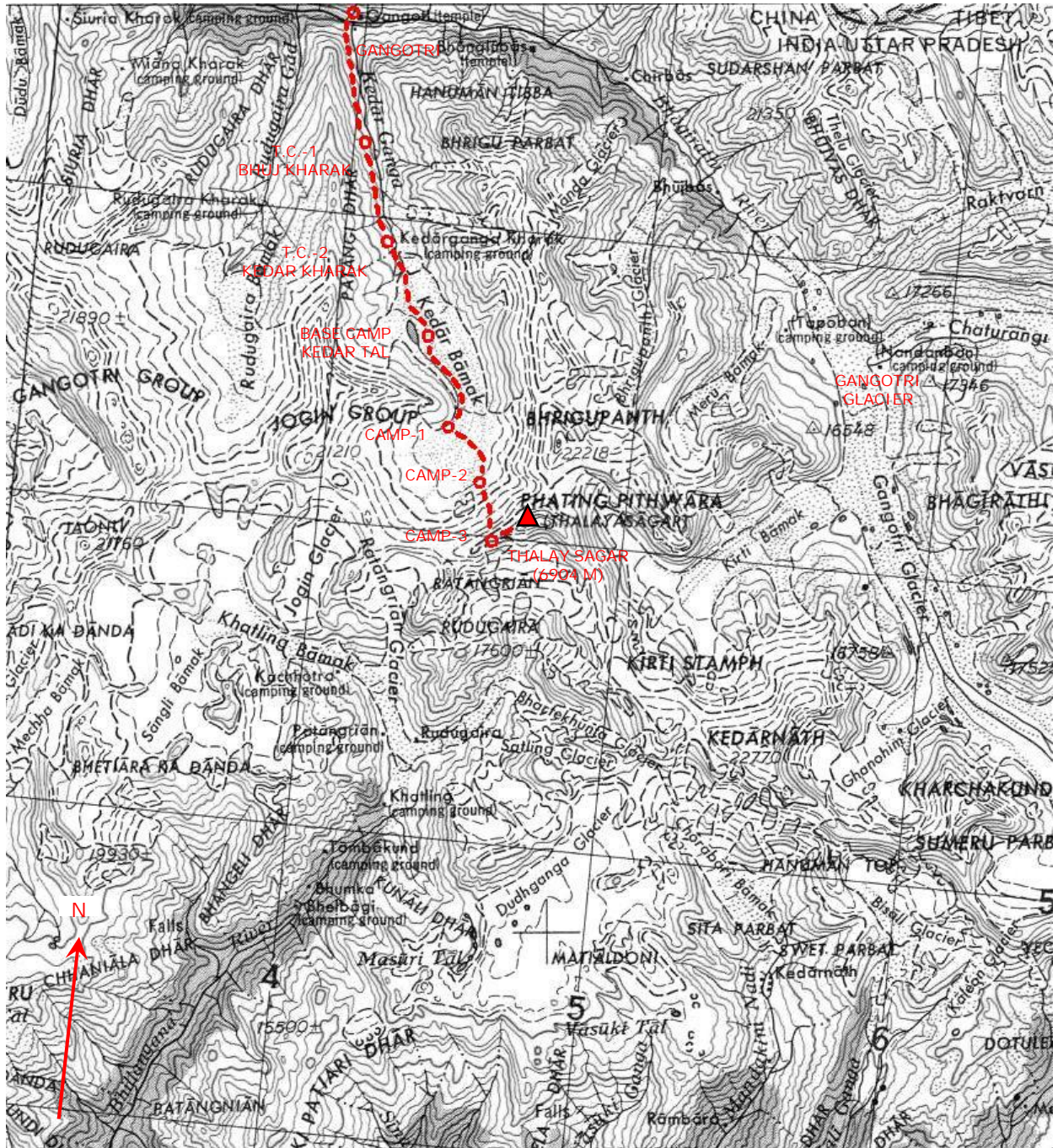
**Mt. Thalay Sagar (6904 M) Expedition 2011**

**South Calcutta Trekkers Association**

Date: 28<sup>th</sup> October, 2011

Place: Kolkata

# ROUTE MAP



## Day to day itinerary

- 17-Aug** The expedition team departed from Howrah Station by Upasana Express.
- 18-Aug** Reached Haridwar at evening and stayed there.
- 19-Aug** Officials of the sponsor of the expedition ACC Limited meet the team and handed over the companies flag. The team then drove to Uttarkashi and reached there at night
- 20-Aug** The day was spent for administrative work, marketing, collecting equipment at NIM.
- 21-Aug** The team left Uttarkashi early morning and after number of transits in the way due to landslides somehow managed to reach Gangotri (3,048 Mt) the same evening.
- 22-Aug** Trek to Bhuj Kharak, TC-I (3,780 Mt).
- 23-Aug** Trek to Kedar Kharak TC-II (4,270 Mt).
- 24-Aug** Trek to Kedar Tal Base Camp (4,912 Mt).
- 25-Aug** Members took rest at the Base Camp. Sherpa ferried load to Camp-I (5,030 Mt approx).
- 26-Aug** The whole team ferried loads to Camp-I.
- 27-Aug** Team left Base Camp and occupied to Camp-I.
- 28-Aug** Due to bad weather the day was of no movement
- 29-Aug** The Team ferried loads to Camp-II (5,335 Mt approx).
- 30-Aug** Members took rest at Camp-I. 3 Sherpa occupied Camp-II
- 31-Aug** Due to bad weather the day was of no movement.
- 1-Sep** Members stayed at Camp-I. 3 Sherpa at Camp-II started route opening to Camp-III
- 2-Sep** 4 Members, 1 Sherpa occupied Camp-II. 3 Sherpa at Camp-II continued rope fixing to Camp-III
- 3-Sep** Due to bad weather the day was of no movement.
- 4-Sep** 4 Members, 4 Sherpa started ascending at 4:00 am for Summit Camp. Made forced-camp (Camp-III) midway (6,000 Mt approx) at 3:30 pm due to bad weather and took shelter.
- 5-Sep** 2 Members, 3 Sherpa started at 9:00 am and reached Camp-IV (6,400 Mt approx) (Summit Camp) at 3:00 pm. 2 Members, 1 Sherpa returned to Camp-II.

- 6-Sep** 2 Sherpa at Camp-IV opened route on the way to the summit. Rest of the members and Sherpa stayed at respective camps.
- 7-Sep** 2 Members & 3 Sherpa from Camp-IV started summit march at 5:00 am. Reached the summit (6,904 Mt) at 9:30 am and returned to Camp-IV safely. Detailed Summit Report is attached along with.
- 8-Sep** 2 Members, 3 Sherpa from Camp-IV came down to Camp-I and met rest of the team at Camp-I.
- 9-Sep** Entire team moved to Base Camp. Rest of the day spent in packing and load re-arrangement.
- 10-Sep** Team started at 7:30 am and reached Gangotri by 12:30 pm. Drove to Uttarkashi and reached by 7 pm.
- 11-Sep** Left Uttarkashi at 10:00 am and reached Haridwar by 8:00 pm night.
- 12-Sep** Left Haridwar at night by Kumbh Express.
- 13-Sep** In train.
- 14-Sep** Reached Howrah Station at morning



## **Summit Report**

On 5<sup>th</sup> September 2 members and 3 Sherpa started moving towards the summit camp (Camp 4) from the location of our forced camp (Camp 3) at 9 a.m. The route to the summit camp consisted of continuous steep slopes of snow with an average gradient of 60-65 degrees. On the entire route polypropylene rope of 9mm diameter was fixed. Summit Camp was reached at 3 p.m. The weather was clear throughout the day except in the morning. Two tents were pitched at the summit camp location on an almost flat snowfield.

On 6<sup>th</sup> September Phurba & Dorje left summit camp at 8 am to fix rope on the route to the summit. They climbed up the snowfield till the base of the main rock tower which connects the snowfield to the west ridge leading up to the summit, and continued on their way up, fixing rope all along. Dawa, Upal and Arindam took rest at the summit camp. The weather was clear all day. Two Sherpa returned at 2.30 p.m.

On 7<sup>th</sup> September, Upal & Arindam and Phurba, Dorje & Dawa started on the summit bid at 4 a.m. It was dark till 5.30 a.m., and during this period head torches were used for climbing. To begin with, the snowfield was crossed leading to the base of the rock tower. The rock tower was climbed vertically following the line of a big crack for approximately 30-40 feet, after which the gradient on the rock became 60 degrees. Then with a short traverse on the rock we moved on to the ridge leading to the summit. The summit ridge was entirely rocky, with soft snow covering the rock at many places. The average gradient was 50-55 degrees. After continuing on the ridge for 2½-3 hours, we traversed a little towards the left, and moved to the North Face of Thalaysagar. Here a vertical rock wall with small overhanging flutings was climbed along the line of a large crack. The length of this wall was approximately 25-30 feet. At the end of this vertical pitch, another 20-25 feet of rock was climbed which had a gradient of 55-60 degrees. This led us to the summit snowfield, the gradient of which was 45-50 degrees. We climbed the snowfield for approximately 30 minutes at the end of which was the summit, a flat ground of snow with gentle elevations going down on three sides and a sharp drop on one side. Arindam & Upal and Phurba, Dorje & Dawa reached the summit at 09:30 am. All along the route to the summit climbing rope of 10 mm diameter was fixed using mostly blade rock pitons of various sizes.

**Rajsekhar Maity**

**Leader**

**Mt. Thalay Sagar (6904 M) Expedition 2011  
South Calcutta Trekkers Association**

Date: 28<sup>th</sup> October, 2011

Place: Kolkata